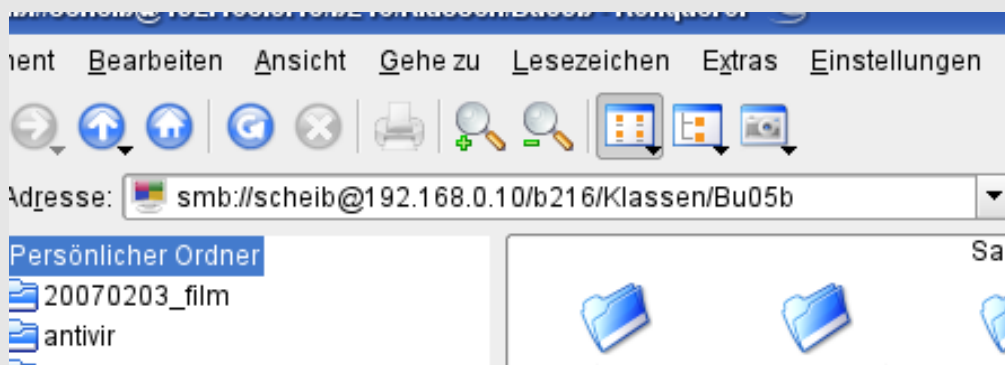


## SMB Zugriff via SSH

- 1) Virtueller Netzwerkadapter anlegen
- 2) Tunnel über ssh aufbauen
- 3) im Dateibrowser: <smb://ip-virtueller-adapter>

## Linux:

- 1) `ifconfig eth0:1 192.168.0.10` (dies macht root)
- 2) `ssh -L 192.168.0.10:139:172.16.0.204:139 root@remote.router.net`

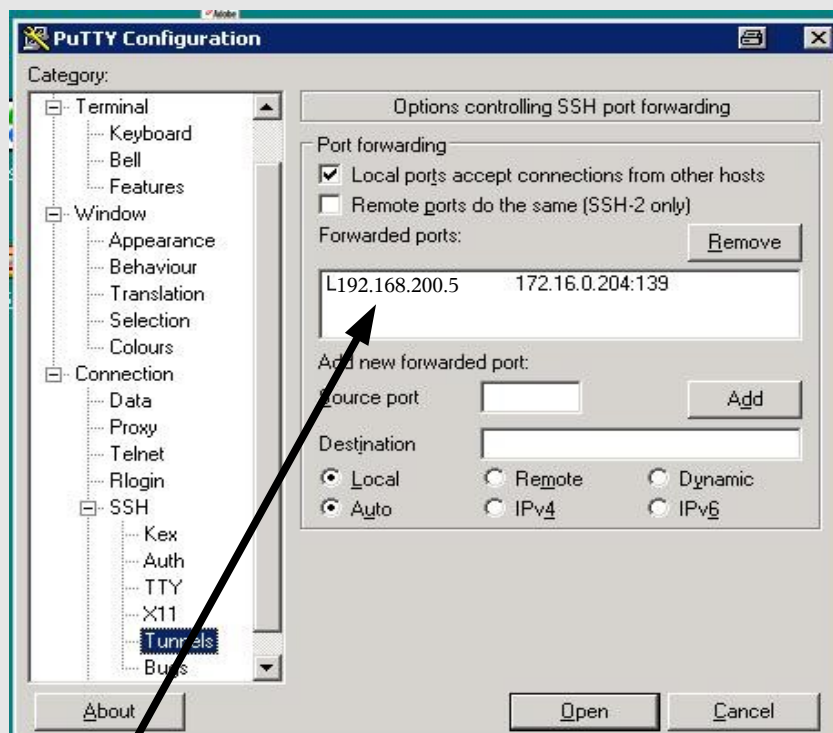
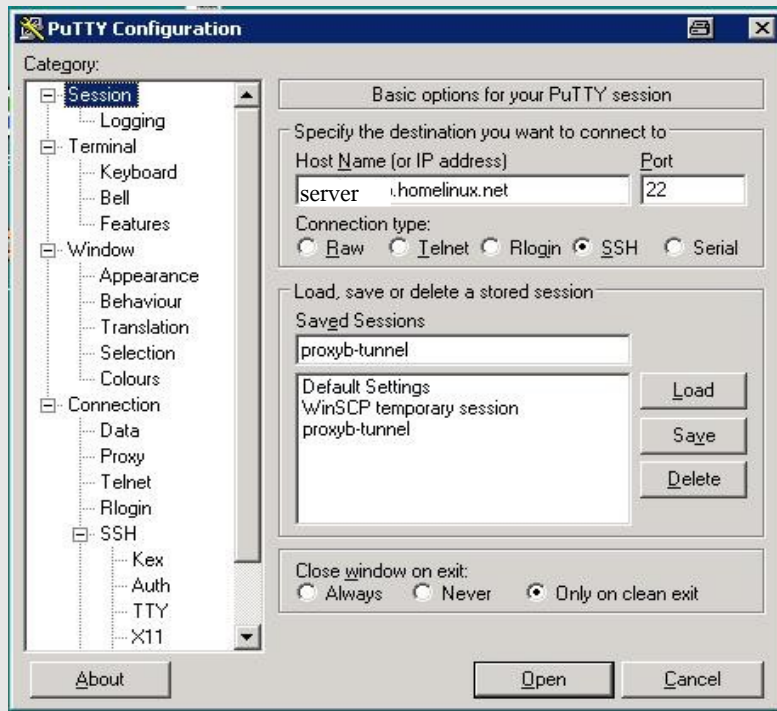


3)

## Windows:

- 1) Loopbackadapter einrichten (Hardware / Netzwerkkarte / Microsoft)
- 2) Netbios over TCP abschalten

3)



- 4) net use z: `\\ip-loopbackadapter\share` `passwort` /USER:username